

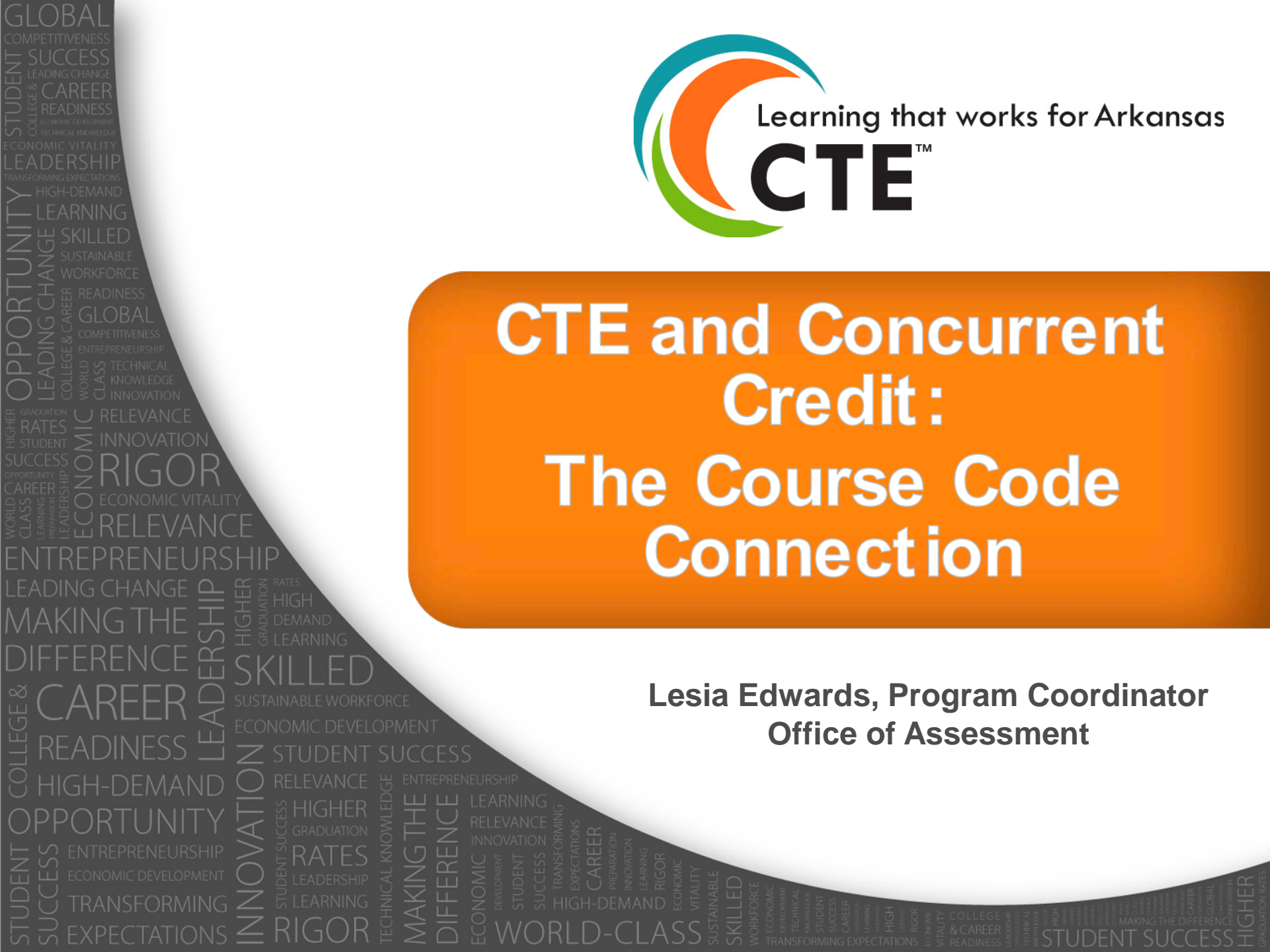


Learning that works for Arkansas

**CTE™**

# CTE and Concurrent Credit: The Course Code Connection

**Lesia Edwards, Program Coordinator  
Office of Assessment**



# Concurrent or Dual Credit

---

Defined by the National Center for Education Statistics (NCES) as:

“a course or program where high school students can earn both high school and postsecondary credits for the same course” (Wells, 2005).

# CTE and Concurrent Credit

---

Are Arkansas students are receiving concurrent credit for high school CTE courses?

How many students?

In what programs?

# CTE and Concurrent Credit

---

## 2016 50-State Comparison

- Compiled by Education Commission of the States (ECS)
- Does state policy explicitly allow high school students to enroll in CTE courses for high school and postsecondary credit?

<http://ecs.force.com/mbdata/MBQuestRT?Rep=DE1316N>

# CTE and Concurrent Credit

---

## Secondary Career Centers

- 25 centers in 2015-16
- 19 centers on post-secondary campuses

Charters and Schools of Innovation

Local High Schools?

**YES**

# High School Master Schedule in eSchool

---

## Course Code

- ACE Concurrent Credit codes by program of study (8 for each POS)
- 280 ACE Concurrent Credit codes in [CCMS](#)
- Replace original high school code with new concurrent credit code
- Example
  - Management POS
  - Use **590210 ACE Concurrent Credit Management I** in place of **492320 Management**

# High School Master Schedule in eSchool

---

## Teacher Name (in Teacher Catalog)

- High school teacher
  - Teacher first name
  - Teacher last name
- College instructor (on or off campus)
  - First name – Concurrent
  - Last name - Credit
- Virtual
  - Teacher first name   **OR**   Concurrent
  - Teacher last name   **OR**   Credit

# High School Master Schedule in eSchool

---

## Teacher Number (in Teacher Catalog)

- High school teacher
  - Teacher SS number
- College instructor (on or off campus)
  - 999999999
- Virtual
  - Teacher SS number **OR** 999999999



# Course Number Accuracy

---

## Data Reporting

- Critical for determining program of study completion
- Critical for concurrent/articulated credit

# Issues/Solutions

---

- **Communication** between secondary and post-secondary institutions is critical
- Secondary centers should send list of teachers, courses/course numbers being taught, and periods to sending schools
- Registrar or counselor should ask for this information if it is not received from center

# Reference List

---

Association for Career and Technical Education (ACTE). 2007. CTE's Role in Secondary-Postsecondary Transitions. Retrieved from: [https://www.acteonline.org/uploadedFiles/Assets\\_and\\_Documents/Global/files/Publications/Transitions.pdf](https://www.acteonline.org/uploadedFiles/Assets_and_Documents/Global/files/Publications/Transitions.pdf)

Education Commission of the States (ECS). 2016. Dual Enrollment: CTE Component 50-State Comparison. Retrieved from: <http://ecs.force.com/mbdata/MBQuestRT?Rep=DE1316N>

# Contact Information

---

**Lesia Edwards**

**lesia.edwards@arkansas.gov**

**501-682-1813**